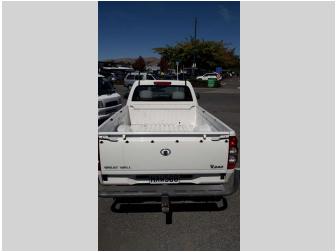
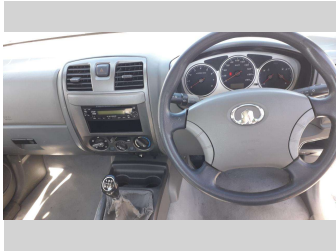


# 2013 Greatwall V240 Ute



### Purchase Price

Includes GST, Registration & Licensing

**\$12,990**

Finance may be available on this vehicle. Ask one of our friendly staff for more information.

Gain peace of mind with Mechanical Breakdown Insurance. **Ask us how.**

### Top features

- » Air Conditioning
- » CD Changer
- » Central Locking
- » Electric windows
- » Power steering
- » Tow Bar

Body Style

**2 door, Ute**

Odometer

**63,326 km**

Engine

**2378 cc**

Fuel Type

**Petrol**

Transmission

**5-Speed Manual**

Wheels

**17", Factory Alloys**

VIN

**LGWCB3372DB661547**

Interior

**Black & Grey, Cloth**

Safety



Based on 2024 UCSR rating for 09-14 models

Reg No.

**HAW500**

Ext Colour

**White**

History

**NZ New, 5 owners**

Seats

**2 seats, Cloth**

CO2 Emissions

★☆☆☆☆

**287 grams/km**

Energy Economy

★☆☆☆☆

**Annual fuel cost of \$4,660  
11.9L per 100km**

Cost per year is an estimate based on petrol price of \$2.80 per litre and an average distance of 14000 km. Emissions and Energy Economy figures standardised to 3P WLTP.

**Stock ID: 2419**



Cars 2 Go | Phone 03 579 2035 | Email cars2go@xtra.co.nz  
46 Arthur Street, Blenheim, Blenheim 7201, New Zealand  
cars2go.co.nz