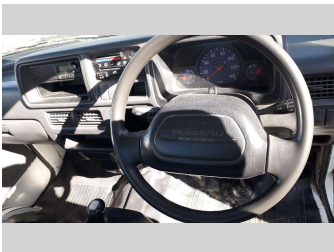
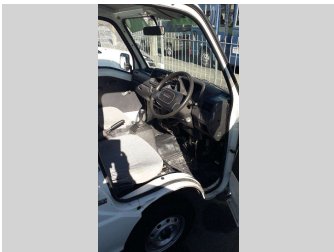
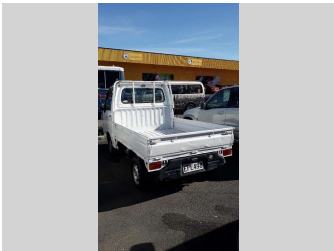


# 2004 Subaru Sambar



Purchase Price

Includes GST, Registration & Licensing

**\$8,990**

Finance may be available on this vehicle. Ask one of our friendly staff for more information.

Gain peace of mind with Mechanical Breakdown Insurance. **Ask us how.**

### Top features

None Listed

Body Style

**2 door, Ute**

Odometer

**93,033 km**

Engine

**650 cc**

Fuel Type

**Petrol**

Transmission

-

Wheels

**12", Steel Wheels**

VIN

**7A8GF1D0808234724**

Interior

**Black**

Safety



Based on 2024 VSRR rating

Reg No.

**EPE498**

Ext Colour

**White**

History

**Ex-Overseas, 2 owners**

Seats

**2 seats, vinyal**

CO2 Emissions

★★★★★☆☆

**173 grams/km**

Energy Economy

★★★☆☆☆☆

**Annual fuel cost of \$2,820**

**7.2L per 100km**

Cost per year is an estimate based on petrol price of \$2.80 per litre and an average distance of 14000 km. Emissions and Energy Economy figures standardised to 3P WLTP.

**Stock ID: 2413**



Cars 2 Go | Phone 03 579 2035 | Email cars2go@xtra.co.nz  
46 Arthur Street, Blenheim, Blenheim 7201, New Zealand  
cars2go.co.nz